



**SPECIALISED  
ASSETS.  
BROAD  
CAPABILITIES.**

TACTICAL PLATFORMS FOR INSHORE  
OPERATIONS

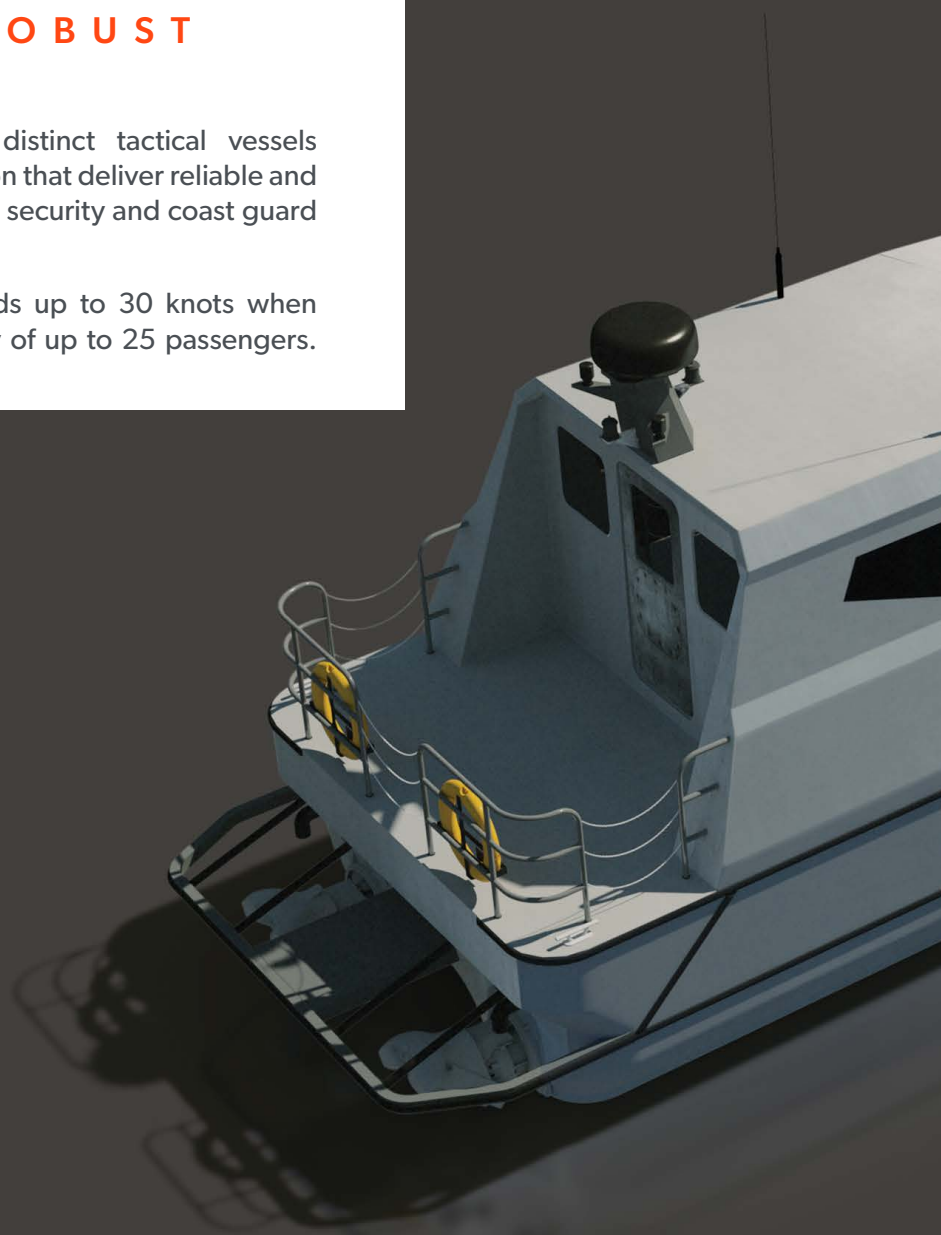


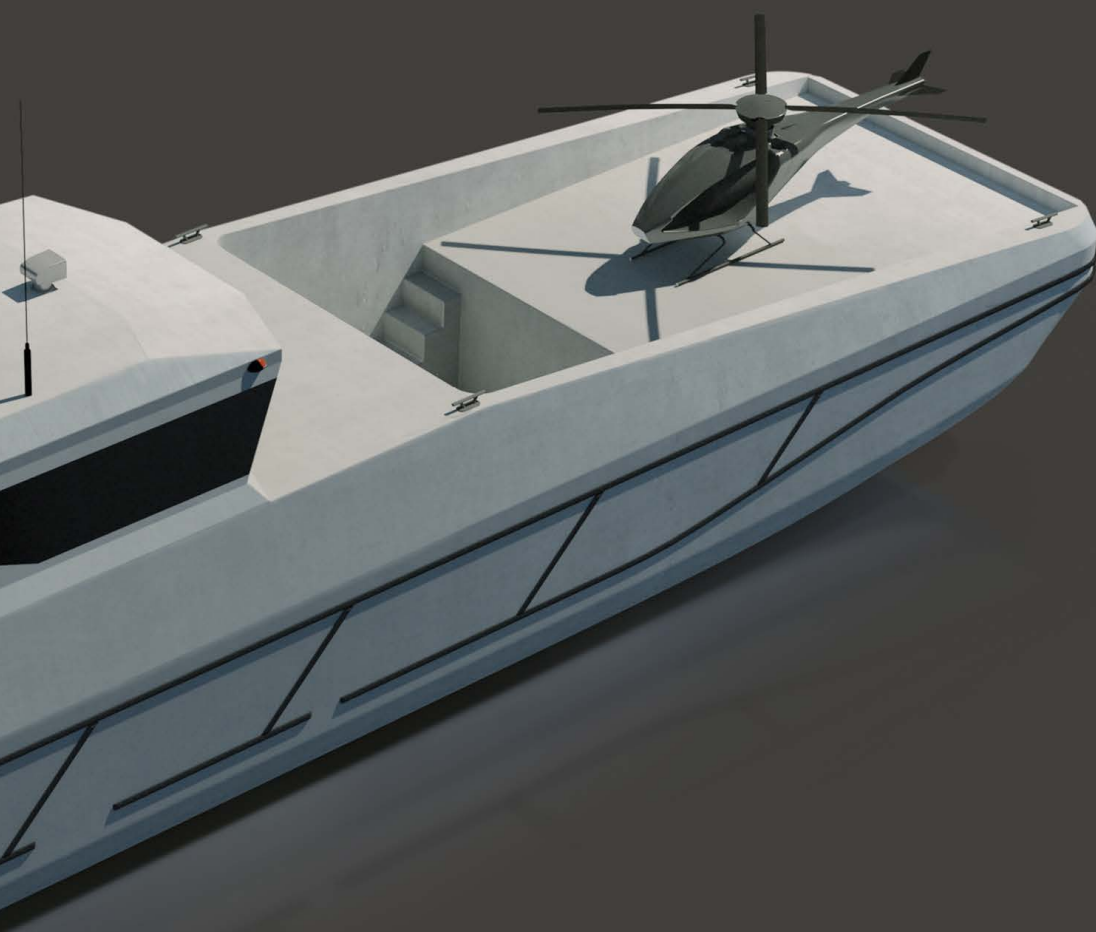
# ROBUST MISSION SUPPORT

## RELIABLE AND ROBUST

The 160 SEA platform offers two distinct tactical vessels developed from a common configuration that deliver reliable and robust capabilities for near-shore naval, security and coast guard operations.

Both specialised vessels feature speeds up to 30 knots when carrying a 5-tonne load and a capacity of up to 25 passengers.





## PURPOSE - BUILT PLATFORMS

The common platform delivers operational efficiencies and simplified logistics, maintenance and repair. The SEA TROOPER meets diverse transport requirements, while the SEA PAD supports inshore ISR operations.

160 SEA TROOP  
TRANSPORTING  
MISSION SUCCE

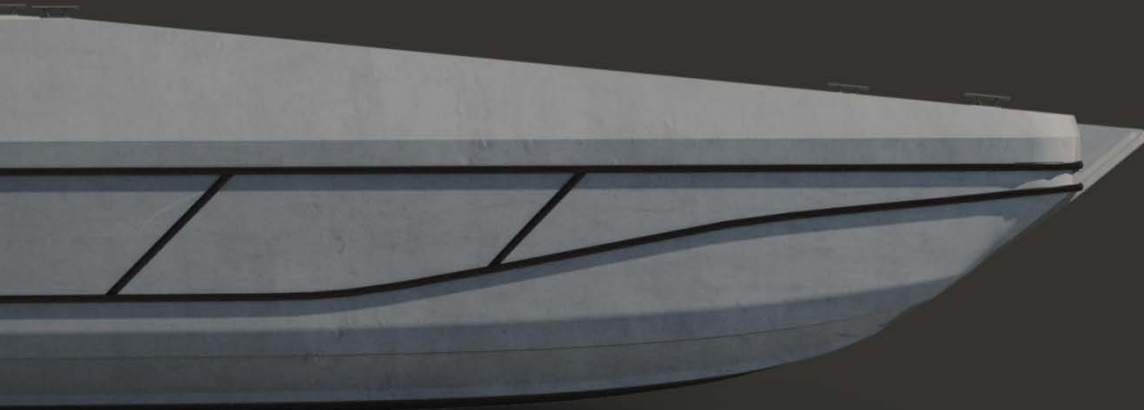


**E R :**

**L A N D I N G - C R A F T  
C A P A B I L I T I E S**

**S S**

The 16.45-metre SEA TROOPER features a landing-craft design with bridge aft and cargo area forward, including a bow ramp that provides an ideal platform for cargo, troops and vehicle transport. The vessel is equipped with two waterjets powered by twin inboard diesel engines.





## M U L T I P L E   C O N F I G U R A T I O N S

The vessel can carry up to 25 personnel and one Humvee-sized vehicle. Optional features include a hydraulic crane for cargo handling, 12.7 mm gun mounts, and ballistic protection. The lower deck area provides shelter, comfort and services for a crew of up to 25 persons, with amenities such as toilet and galley, as well as weapons storage.

# S P E C I F I C A T I O N S

## TECHNICAL DATA

<b>LOA</b>	16.45M
<b>BEAM OA</b>	3.89M
<b>DRAFT</b>	0.87M APPROX.
<b>SPEED</b>	30KN APPROX. (WITH 5T LOAD)
<b>COMPLEMENT</b>	UP TO 25 CREW
<b>DIESEL</b>	2 X 1000L
<b>WATER</b>	100L

## MACHINERY

<b>PROPULSION</b>	2 X WATERJETS
<b>MAIN ENGINES</b>	2 X INBOARD DIESEL ENGINES

# 160 SEA PAD: MULTI-ROLE PLATFORM



## ISR SUPPORT

The 16-metre SEA PAD offers exceptional support to offshore intelligence, surveillance and reconnaissance (ISR) operations by providing a landing pad for unmanned aerial vehicles (UAVs) with a rotor diameter of up to 3.8 metres and by serving as an ideal platform for the launch and recovery of sonars.



## LOWER-DECK SHELTER

The lower deck provides shelter, comfort and services to a crew of up to 25 persons, with amenities such as toilet and galley. The versatile space also provides weapons storage and can be configured to serve as a workshop and storage space for small UAVs.

## SPECIFICATIONS

### TECHNICAL DATA

<b>LOA</b>	16M
<b>BEAM OA</b>	3.89M
<b>DRAFT</b>	0.87M APPROX.
<b>SPEED</b>	30 KN APPROX. (WITH 5T LOAD)
<b>COMPLEMENT</b>	UP TO 25 CREW
<b>DIESEL</b>	2 X 1000L
<b>WATER</b>	100L

### MACHINERY

<b>PROPULSION</b>	2 X WATERJETS
<b>MAIN ENGINES</b>	2 X INBOARD DIESEL ENGINES







# CRAFT IN EVERY VESSEL.

ADSB specialises in the build, repair, maintenance, refit, and conversion of naval and commercial vessels. With 25 years of service to the UAE and beyond, we are one of the most experienced shipyards in the region.

We deploy the latest technologies to maximise fleet readiness, extend ship lifetimes, and lower overall lifecycle costs.

We deliver superior quality, reliability and cost efficiencies through our focus on world-class design selection, development of a skilled workforce with extensive technical experience, exceptional integration capabilities and precision steel fabrication.





# OUR SUCCESS STORIES

BAYNUNAH CLASS  
CORVETTE



ARIALAH CLASS  
OFFSHORE PATROL VESSEL



MULTI-ROLE  
TACTICAL PLATFORM



LANDING CRAFT  
16M SEAKEEPER



**DISCLAIMER**

All data is strictly confidential and subject to confirmation. Specifications and final design subject to agreement with the customer.  
Illustrations for indicative use only.

ADSB  
Mussafah Industrial Area  
P.O. Box 8922  
Abu Dhabi, UAE  
+971 2 502 8000  
marketing@adsb.ae

[adsb.ae](http://adsb.ae)

© ADSB 2020. All rights reserved.