



**F A S T
I N T E R C E P T O R .
I N S H O R E
P A T R O L .**

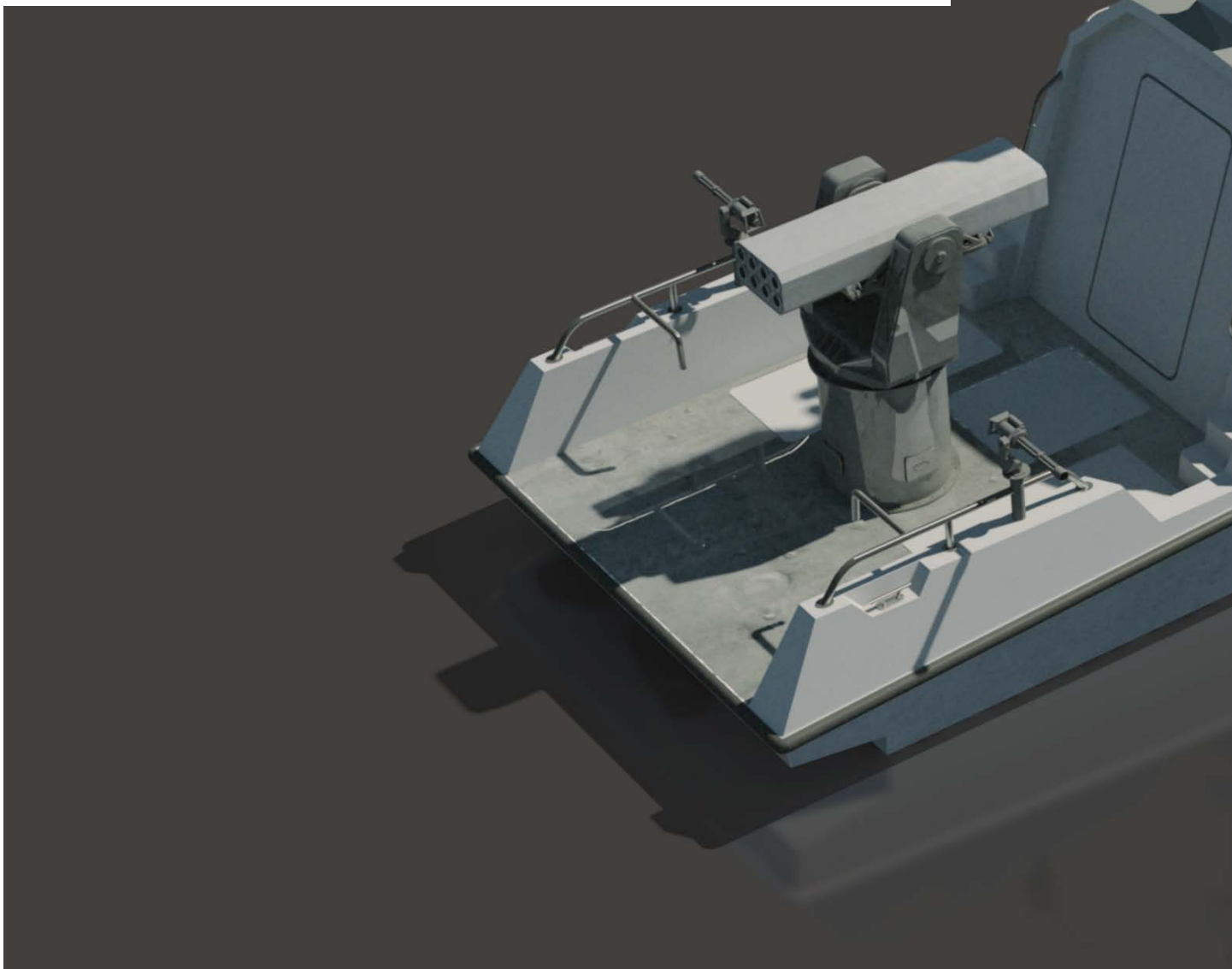
**16 - M E T R E , H I G H - S P E E D
E N G A G E M E N T P L A T F O R M .**



M U L T I P L E M I S S I O N S . O N E G O A L .

P O W E R A N D P E R F O R M A N C E

The 16-metre inshore tactical and engagement platform (ITEP) delivers power and performance for high-speed pursuit, fast interception and a wide range of general patrol missions.





Offering up to 12 hours of un-refuelled, un-supported operations, and speeds exceeding 45 knots, the 160 ITEP platform provides defence, security and coast guard organisations with a patrol boat that's flexible to deploy, and both effective and comfortable to command. Built under class and fitted out to high standards of design and engineering, all three versions feature shock mitigating seats, a toilet, galley and berths.

DESIGNED
FOR YOUR
MISSION'S
SUCCESS

THREE VERSIONS
INBOARD. OUTBOARD. LONG CABIN



The 160 ITEP platform offers three distinct configurations built on a common base for simplified logistics, maintenance and repair. Based on mission requirements, climate, and marine environments, customers can choose inboard, outboard and long cabin versions.



160 ITEP INBOARD (IB): EXCEPTIONAL SEAKEEPING.



SHALLOW-WATER ADVANTAGE

The 160 ITEP IB Version features a deep V-hull and two waterjets powered by twin 1,000hp inboard diesel engines, providing not only a tactical advantage in shallow waters, but also exceptional seakeeping abilities, performance and efficiency. This version accommodates a crew of up to six.

ARMAMENTS AND DECK SPACE

Featuring two gunner consoles, the vessel can carry a short-range missile launcher and 12.7mm turret while 7.62mm guns mounted aft of the cabin provide secondary armaments. The large aft deck facilitates a range of configurations, whether it's extra equipment, weapons or other mission-specific payloads.

SPECIFICATIONS

TECHNICAL DATA

LOA	16M
BEAM OA	4.10M
DRAFT	1M APPROX.
LOAD DISPLACEMENT	17T APPROX.
SPEED	45+ KN APPROX. @ FULL LOAD (SEA STATE 1)
COMPLEMENT	2 GUNNERS + 4 CREW
DIESEL	2200L
FRESHWATER	88L

MACHINERY

PROPULSION	2 X WATERJETS
MAIN ENGINES	2 X 1000HP INBOARD DIESEL ENGINES
GENERATOR	2 X 17KW

WEAPONS (FTR)

1 X ROCKET LAUNCHER
1 X 12.7MM RWS TOP OF CABIN
2 X 7.62MM GUN AFT

160 ITEP OUTBOARD (OB): HIGHLY AGILE.



LIGHTWEIGHT WITH SELF-RIGHTING CAPABILITY

The 160 ITEP OB Version is equipped with four 350hp outboard engines and a deep V-hull, making it lightweight and highly agile. Designed with self-righting capability, the vessel is ideal for missions in a range of sea conditions. The vessel can accommodate a crew of up to six.

ARMAMENTS AND DECK SPACE

Featuring two gunner consoles, the vessel can carry a short-range missile launcher and 12.7 mm turret while 7.62 mm guns mounted aft of the cabin provide secondary armaments. A large aft deck enables a range of configurations, whether it's extra equipment, weapons or other mission-specific payloads.

SPECIFICATIONS

TECHNICAL DATA

LOA	16M
BEAM OA	4.10M
DRAFT	0.85M APPROX.
LOAD DISPLACEMENT	15T APPROX.
SPEED	45+ KN APPROX. @ FULL LOAD (SEA STATE 1)
COMPLEMENT	2 GUNNERS + 4 CREW
DIESEL	400L
PETROL	2200L
FRESHWATER	88L

MACHINERY

PROPULSION	4 X 350HP OUTBOARD ENGINES
GENERATOR	2 X 17KW

WEAPONS (FTR)

1 X ROCKET LAUNCHER
1 X 12.7MM RWS TOP OF CABIN
2 X 7.62MM GUN AFT

160 ITEP LONG CABIN (LC): PERSONNEL INTENSIVE



10 CREW AND PASSENGERS

The 160 ITEP LC Version is equipped with four 350hp outboard engines and a long cabin to accommodate more personnel. With seating for up to 10 people, the vessel provides fleet flexibility to perform more personnel-intensive missions.

ARMAMENTS

The vessel offers enhanced firepower, with the long cabin roof providing placement for a 12.7 mm manual or RWS, and secondary armaments are provided by two 7.62 mm guns mounted forward and two aft of the cabin.

SPECIFICATIONS

TECHNICAL DATA

LOA	16M
BEAM OA	4.10M
DRAFT	0.85M APPROX.
LOAD DISPLACEMENT	15T APPROX.
SPEED	45+ KN APPROX. @ FULL LOAD (SEA STATE 1)
COMPLEMENT	10 CREW
DIESEL	400L
PETROL	2200L
FRESHWATER	88L

MACHINERY

PROPULSION	4 X 350HP OUTBOARD ENGINES
GENERATOR	1 X 12KW

WEAPONS (FTR)

2 X 7.62 MM GUN AFT

2 X 7.62 MM GUN FORWARD

1 X MANUAL OR RWS 12.7 MM TOP OF CABIN



CRAFT IN EVERY VESSEL.

ADSB specialises in the build, repair, maintenance, refit, and conversion of naval and commercial vessels. With 25 years of service to the UAE and beyond, we are one of the most experienced shipyards in the region.

We deploy the latest technologies to maximise fleet readiness, extend ship lifetimes, and lower overall lifecycle costs.

We deliver superior quality, reliability and cost efficiencies through our focus on world-class design selection, development of a skilled workforce with extensive technical experience, exceptional integration capabilities and precision steel fabrication.





OUR SUCCESS STORIES

BAYNUNAH CLASS
CORVETTE



ARIALAH CLASS
OFFSHORE PATROL VESSEL



MULTI-ROLE
TACTICAL PLATFORM



LANDING CRAFT
16M SEAKEEPER



DISCLAIMER

All data is strictly confidential and subject to confirmation. Specifications and final design subject to agreement with the customer.
Illustrations for indicative use only.

ADSB
Mussafah Industrial Area
P.O. Box 8922
Abu Dhabi, UAE
+971 2 502 8000
marketing@adsb.ae

adsb.ae

© ADSB 2020. All rights reserved.