

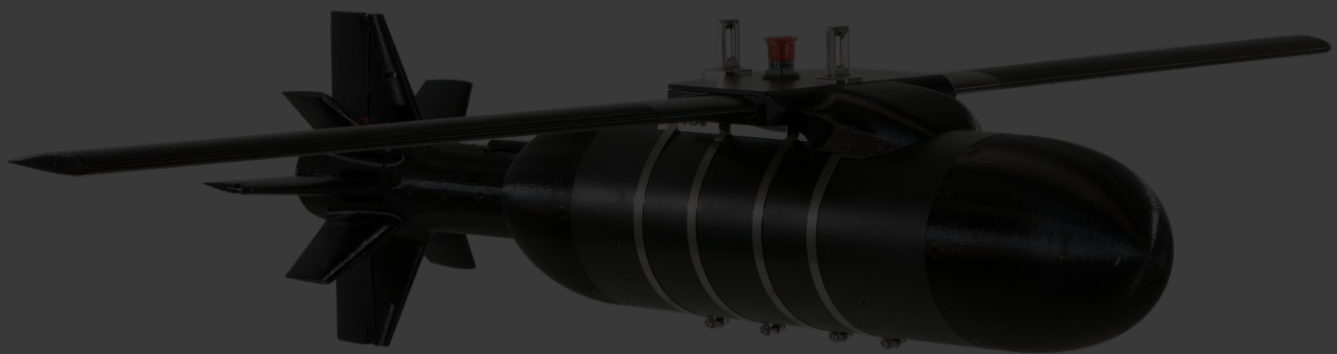
ADASI

RASH - 2H

AUTONOMOUS ATTACK. MISSION CONFIGURABLE.

The RASH – 2H converts a standard XX kg mortar into a low-cost, high-precision guided munition system capable of swiftly engaging unexpected small- to medium-sized threats. The system is ideal for patrol missions, border security, and accurately eliminating high-value threats.

Compact enough for integration into most tactical unmanned and manned aerial platforms (rotary and fixed-wing), this modern glider system features advanced automation and communication technologies. Designed and manufactured in the UAE, the RASH – 2H can support up to 24 precision guided munitions, giving users maximum flexibility during the retrofit process.



SPECIFICATIONS

KEY FEATURES

- Integrates into most tactical unmanned and manned aerial platforms (rotary and fixed-wing)
- Up to 24 launch slots and guided munitions possible
- Modular and configurable

SYSTEM OVERVIEW

- Optional payload camera with target coordinates
- Fully autonomous flight control

SPECIFICATIONS

Wingspan	1m
Weight of guided munition	14.5 kg
Max altitude	25000 ft
Max range at 5000 ft altitude	3.6 km
Max range at 10000 ft altitude	8.6 km
Max range at 15000 ft altitude	13.6 km
Max range at 25000 ft altitude	23 km
Max operating speed	140 m/s (500 km/h)
Stall speed	80 m/s (290 km/h)
Communications (control hub to guided munition)	UHF link
Flight control	Fully autonomous
Guidance	GPS INS (optional 2nd GPS receiver possible)
Current targeting	Payload or fixed coordinates
Future targeting	Laser designation system
Max dive angle	30-60 degrees
Fuse type	Impact and proximity

WARHEAD SPECS

Caliber	129 m
Length	350 mm
Number of Fragments	10,700
Lethal Radius	=> 60 m
Weight	11.6 kg